

# Comprehensive Microinverter Solutions Provider

CN POWER(GUANGDONG) CO., LTD



# Core Advantages

**CNP<sup>o</sup>WER**

## CN Power's Brand Excellence

- Specializing in OEM/ODM customization of microinverters with rich experience.
- Daily production capacity 2000pcs per production line.
- Six production lines to meet your order demands.

## Innovative and Tech-Driven Team

- The R&D team core members from Emerson & Huawei.
- Self-owned household balcony PV ESMS, achieving API integration with dynamic electricity price suppliers.

## Professional after sales service

- Three overseas warehouses and Two factories in China to ensure supply demands.
- Locally hosted cloud servers in Europe deliver better performance and safer data storage.
- Localized after-sales services with prompt responses.

# The Manufacturing Capabilities

**CNP<sup>POWER</sup>**



**Shenzhen, China**



**Germany**



**Hungary**



**Jiangxi, China**



**Netherlands**

**>5**

Establish 3 local  
warehouses globally, and 2  
production bases  
domestically .



1165 Budapest .Baross Gábor utca 12



Rheingaustraße 19, 65375 Oestrich  
Winkel Germany



Malledijk 3h, 3208 LA Spijkenisse  
Netherlands

**2000+**

Daily production capacity  $\geq$   
2000pcs per production line.



20,000 m<sup>2</sup> production base in Xinfeng,  
Jiangxi China



Class 100 000 Cleanroom



Daily production capacity  $\geq$  2000pcs per  
production line

# Innovation Keeps Us Running



## ● Hybrid Microinverter

PVC-(800)T1A-M1

For off-grid and on-grid scenarios  
For all-in-one energy storage battery

## HYBRID MICROINVERTER PRODUCT SERIES

		2-in-1 Series Microinverter PVC-800T1A-M1	4-in-1 Series Microinverter PVC - (1600/2000) T1A-M1
PV SIDE	PV Module Power(W)	240 to 600+	
	PV Input Voltage Range(V)	16~60	
	Maximum PV Input Current(A)	2×18	4×18
	No. of MPPT	2	4
	Efficiency of MPPT	99.80%	
AC SIDE	Rated Output Power for On/Off Grid (VA)	800	1600/2000
	Rated AC Voltage for On/Off Grid (V)	230	
	Rated Grid Frequency/Range for On/Off Grid	50/60	
	Power Factor	>0.99	
	Peak Efficiency (On-grid/Off-grid)	96.50% / 94%	
	Total Harmonic Distortion (On-grid/Off-grid)	(@Rated Output)/<3%(@Linear Load)	
	BATTERY SIDE	Battery Type	Lithium battery/lead-acid battery
Battery Voltage/Range(V)		48/40-55	
Maximum Charge/Discharge Current(A)		20	
Number of battery input channels		1	
OTHERS	Cooling	Natural Cooling(Fanless)	
	Ambient Temperature	-45°C~+65°C	
	Protection Level	IP67 Protection Level	
	Communication Method	Sub-1G、RS-485、WiFi/BT	
	Topology(components)	High Frequency Isolation/High Frequency Isolation	

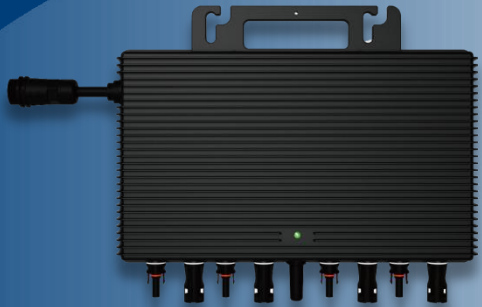
# Innovation Keeps Us Running



## ● Grid-tied Microinverter

PVA-(600/800/1000)T1A-M1

2-in-1 connection  
2 MPPTs

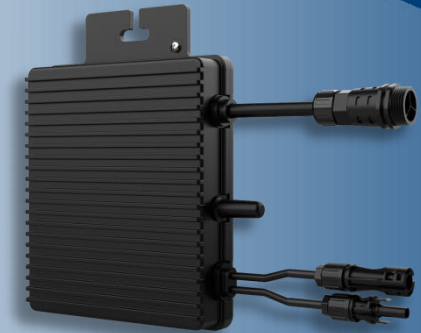


## ● Grid-tied Microinverter

PVA-(1200/1600/2000)T1A-M1

4-in-1 connection  
2 MPPTs

		1-in-1 Series Microinverter PVA-(300/400/500)T1A-M1	2-in-1 Series Microinverter PVA-(600/800/1000)T1A-M1	4-in-1 Series Microinverter PVA-(1200/1600/2000)T1A-M1
PV INPUT SIDE	PV Module Power(W)		240 to 600+	
	PV Input Voltage Range(V)		16~60	
	Maximum PV Input Current(A)	16/18/18	2×16 / 2×18 / 2×18	4×16 / 4×18 / 4×18
	No. of MPPT	1	2	4
	Efficiency of MPPT		99.80%	
AC OUTPUT SIDE	AC Rated Power(VA)	300/400/500	600/800/1000	1200/1600/2000
	AC Rated Voltage(V)		230	
	Rated Grid Frequency(HZ)		50/60	
	Power Factor		>0.99	
	Peak Inverter Efficiency		96.50%	
	Total Harmonic Distortion		<3%	
OTHERS	Size (W · H · Dmm)	173*238*36	265*215*39	338*246*35
	Weight (kg)	3.0	3.75	4.85
	Cooling		Natural Cooling (Fanless)	
	Ambient Temperature		-45°C~+65°C	
	Protection Level		IP67 Protection Level	
	Communication Method		Sub-1G、RS-485、WiFi/BT	
	Topology(components)		High Frequency Isolation	



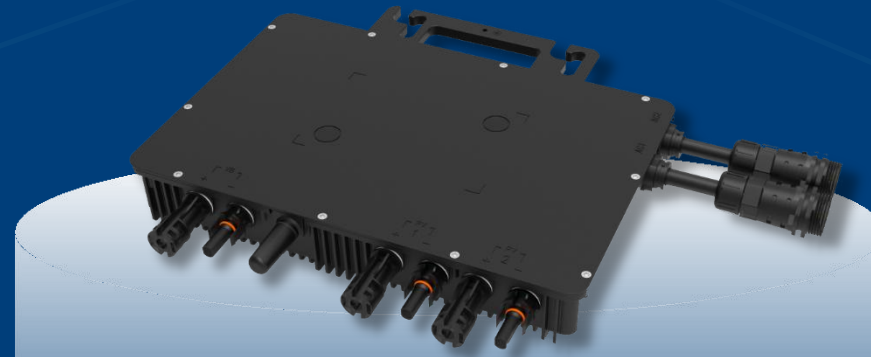
## ● Grid-tied Microinverter

PVA-(300/400/500)T1A-M1

1-in-1 connection  
1 MPPT

# Hybrid Microinverter

CNP<sup>POWER</sup>



Safer and more reliable,  
safeguarding your  
household electricity.



Eliminating the risk of  
high pressure at its source

- Safety voltage with a DC input voltage < 60V.
- Component-level rapid shutdown function, cutting off current < 0.5s.
- IP67 protection rating.



Flexible integration of DC & AC  
energy storage

- DC-side energy storage:  
Directly connect to the battery pack to reduce energy loss.
- AC-side energy storage:  
Integrate with the third-party energy storage systems through intelligent gateway.



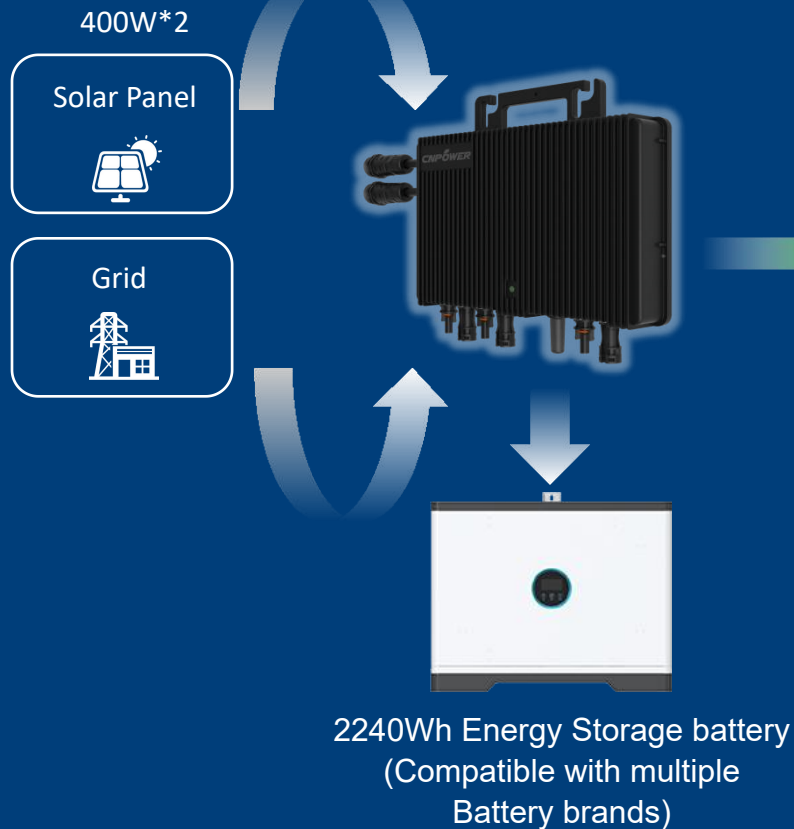
Functional Design

Dual-mode operation with flexible switching between  
grid-connected and off-grid systems.  
Multi-energy integration for smarter electricity usage.

# CN Power Microinverter System



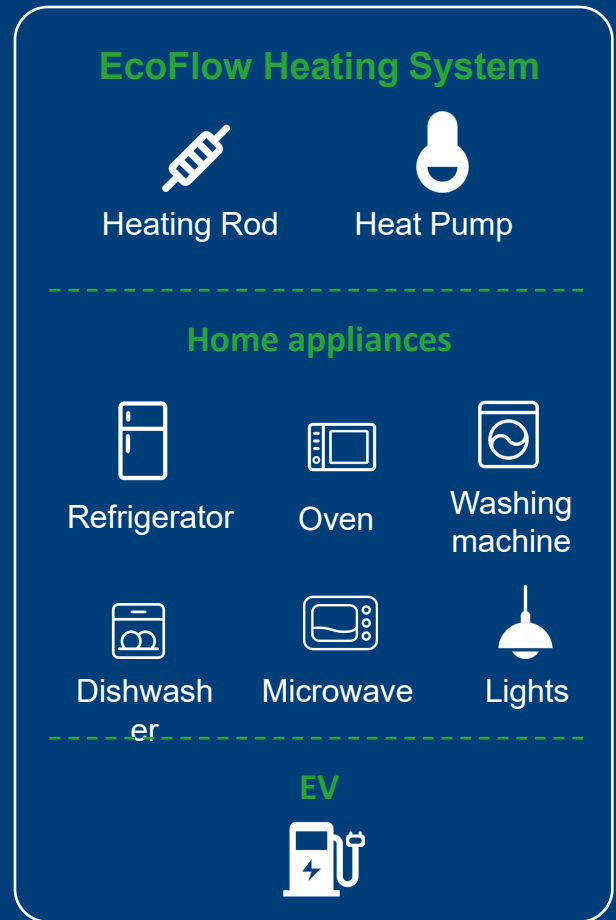
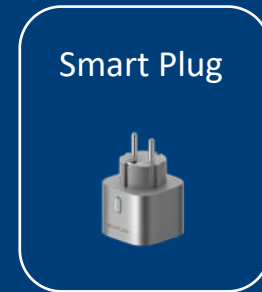
## Hybrid Microinverter PVC 800



## CN POWER CLOUD



Data Overview  
Real-time Monitoring  
Intelligent Operation and Maintenance



# THANK YOU

**CN POWER (Guangdong) Co., Ltd.**

Add.: Room 609, Zhuhai Industrial Technology Research Institute, Guangdong Academy of Sciences, No.568,  
Jinhe Road, Hongqi Town, Jinwan District, Zhuhai, PR China  
Headquarter: No. 65, Hongyin Road, Guangming District, Shenzhen, PR China

**Tel:** +86-0755-28179806

**Website:** [www.cnpowerinv.com](http://www.cnpowerinv.com)

**Email:** [zjn@szzccanon.com.cn](mailto:zjn@szzccanon.com.cn)



Scan code to connect